

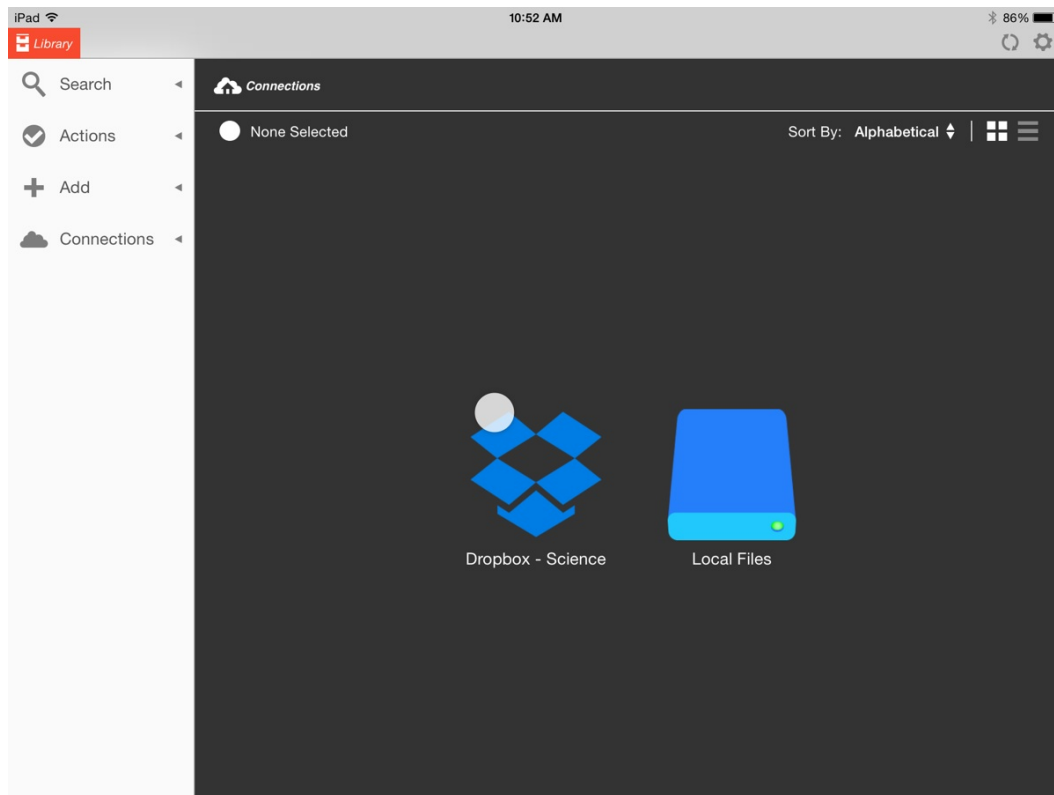
# How I use iAnnotate



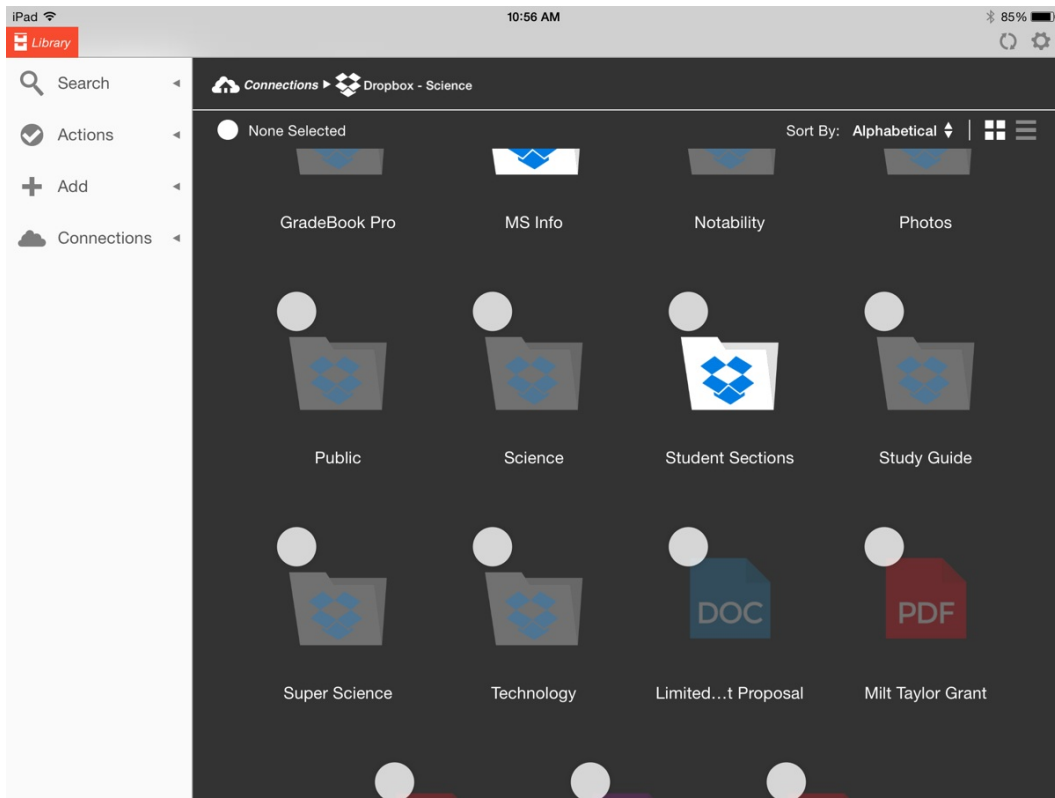
iAnnotate was created by Branchfire, Inc., and it can be used to read, mark, and share different file types. I primarily use it to read and mark PDF files. It is a rather expensive app (\$9.99) but I have found it very useful in grading student work.

iAnnotate uses Cloud Connections with Dropbox, Google Drive, OneDrive, Box, and WebDAV. I prefer using the Dropbox connection since I have students store their science work there.

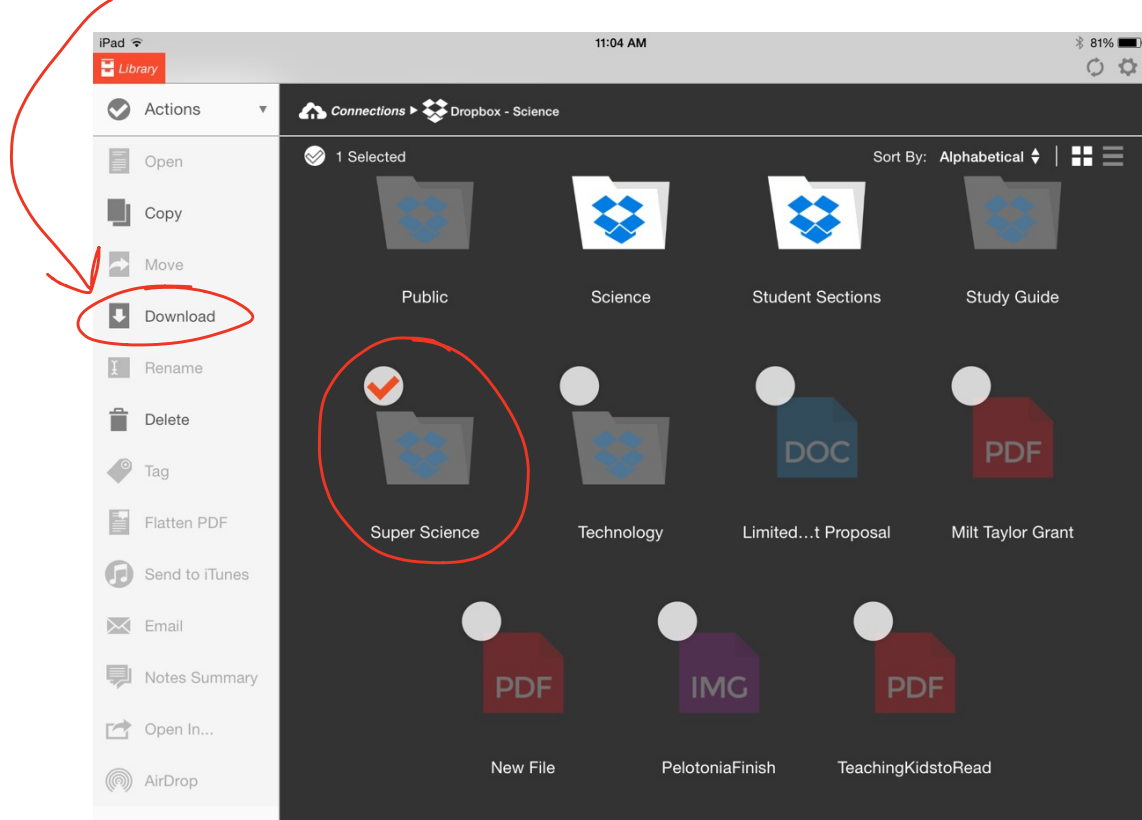
Once I registered for my account, I then connected my Dropbox account to iAnnotate. I had to go to the iAnnotate Library, press 'Connections' and then press 'Add Dropbox.' I had to enter my Dropbox info and pressed 'Set Up Connection' (there are excellent directions on how to do this on the Branchfire support page). Here is a photo of what it looked like after I connected my Dropbox account.



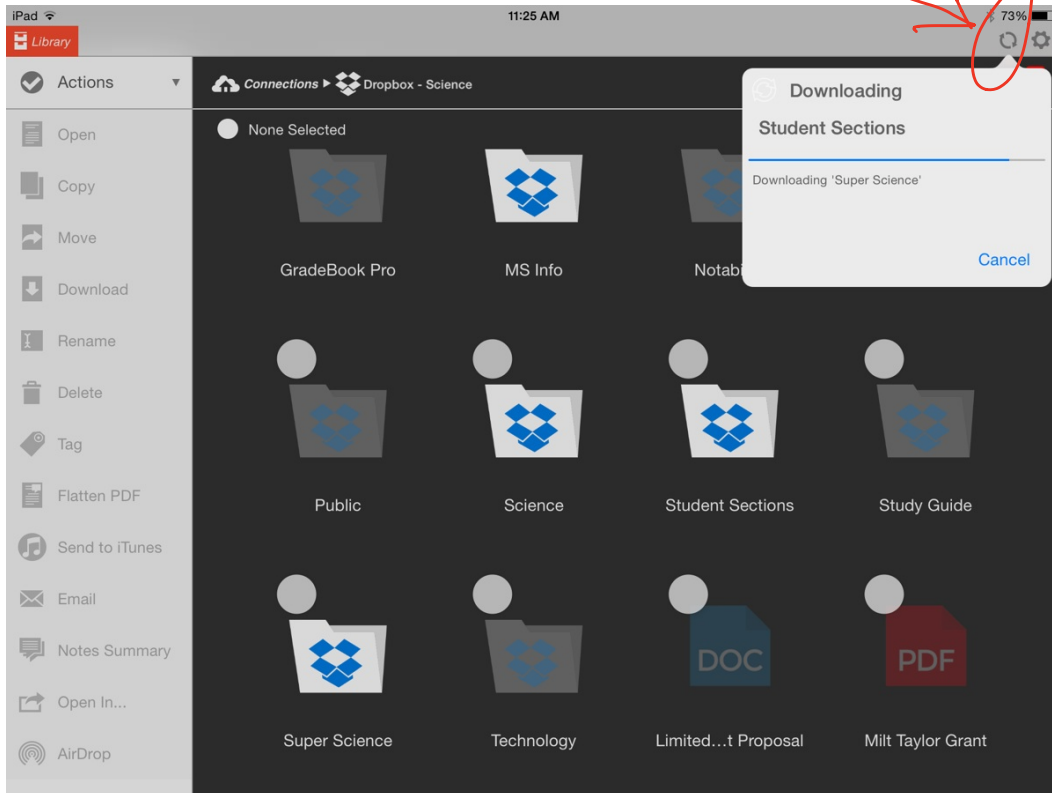
When I click on the 'Dropbox-Science' icon, all my Dropbox folders appear.



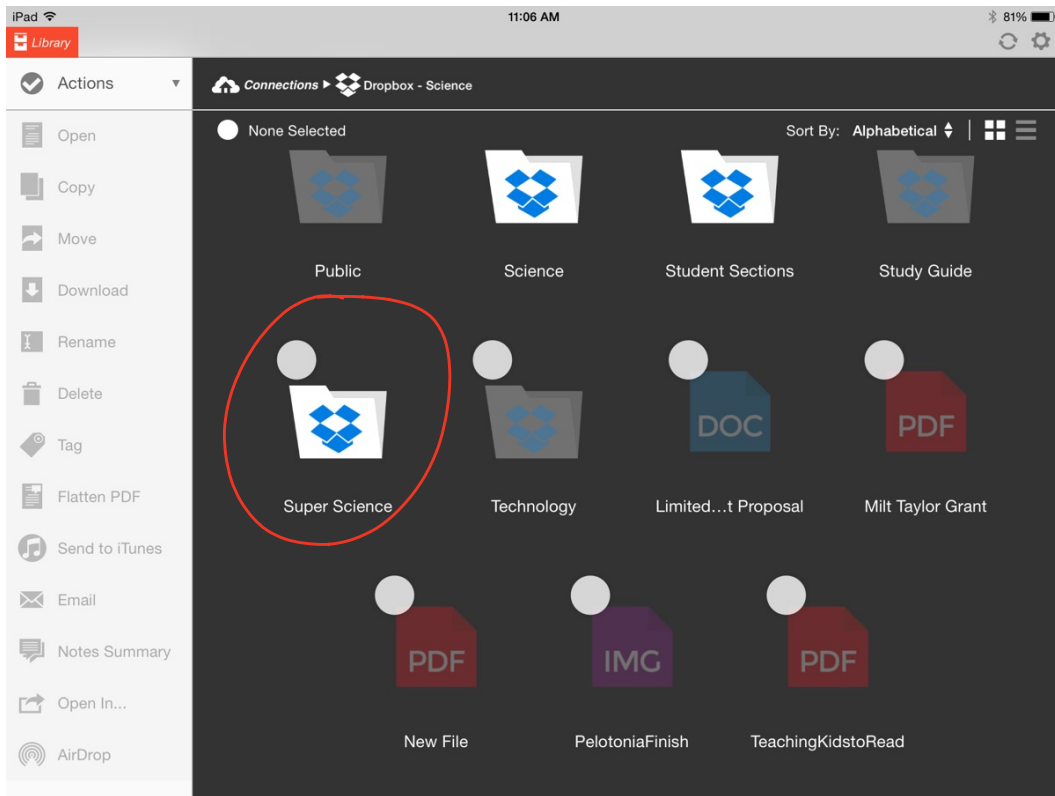
To download a Dropbox folder to iAnnotate, click on the circle above the folder (in this photo it is the 'Super Science' folder; a checkmark will appear in the circle. Press 'Download' in the column on the left.



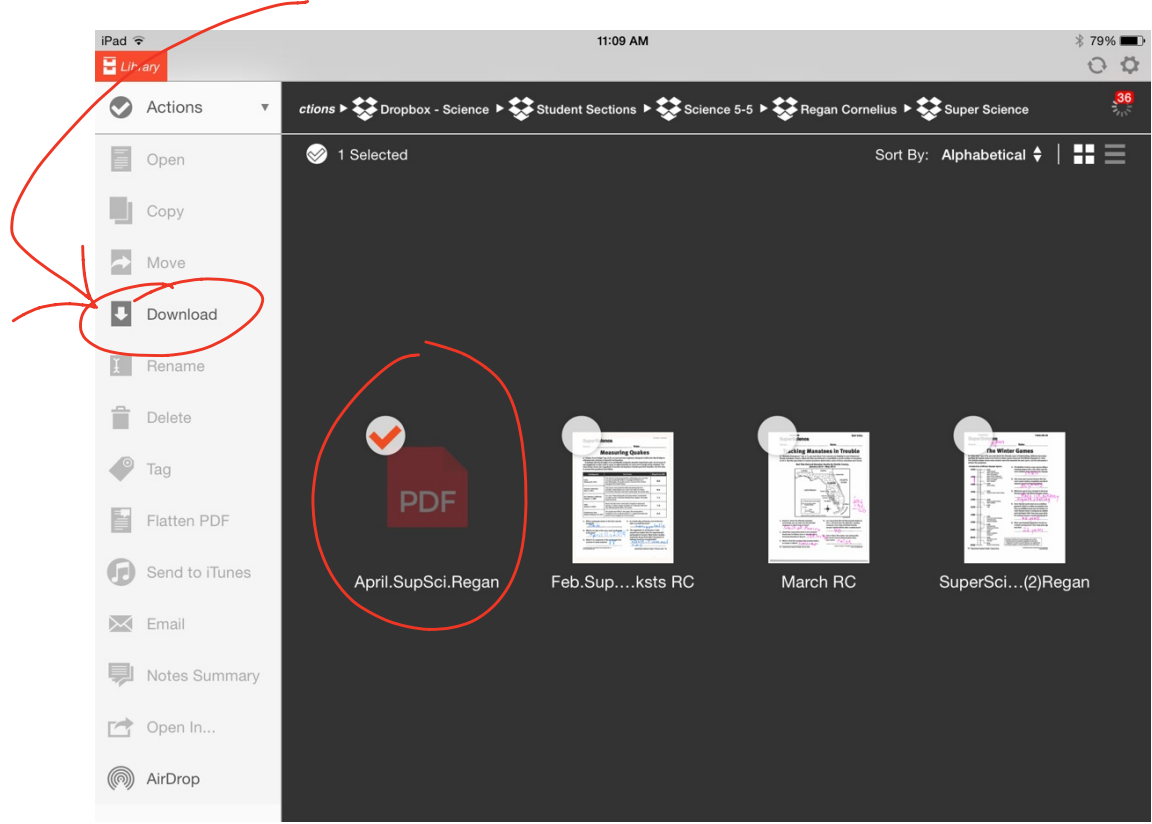
Your folder will begin to download (you can see this by the rotating arrows in the top right corner of the screen; if you press on those arrows you will see the download in progress).



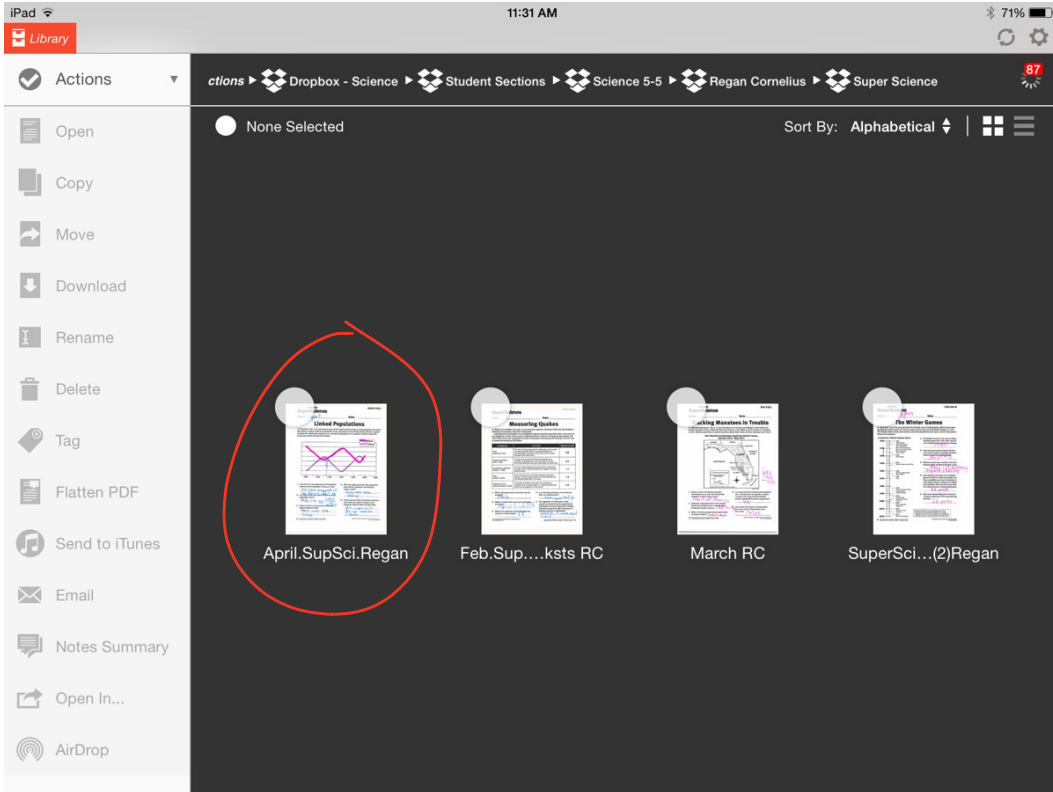
When the folder has been downloaded, it will change color from gray to white.



Click on the folder and any files in it will now appear. If you want to download the PDF, simply click on the circle on the PDF. A checkmark will appear, and then you need to press download in the left column again.

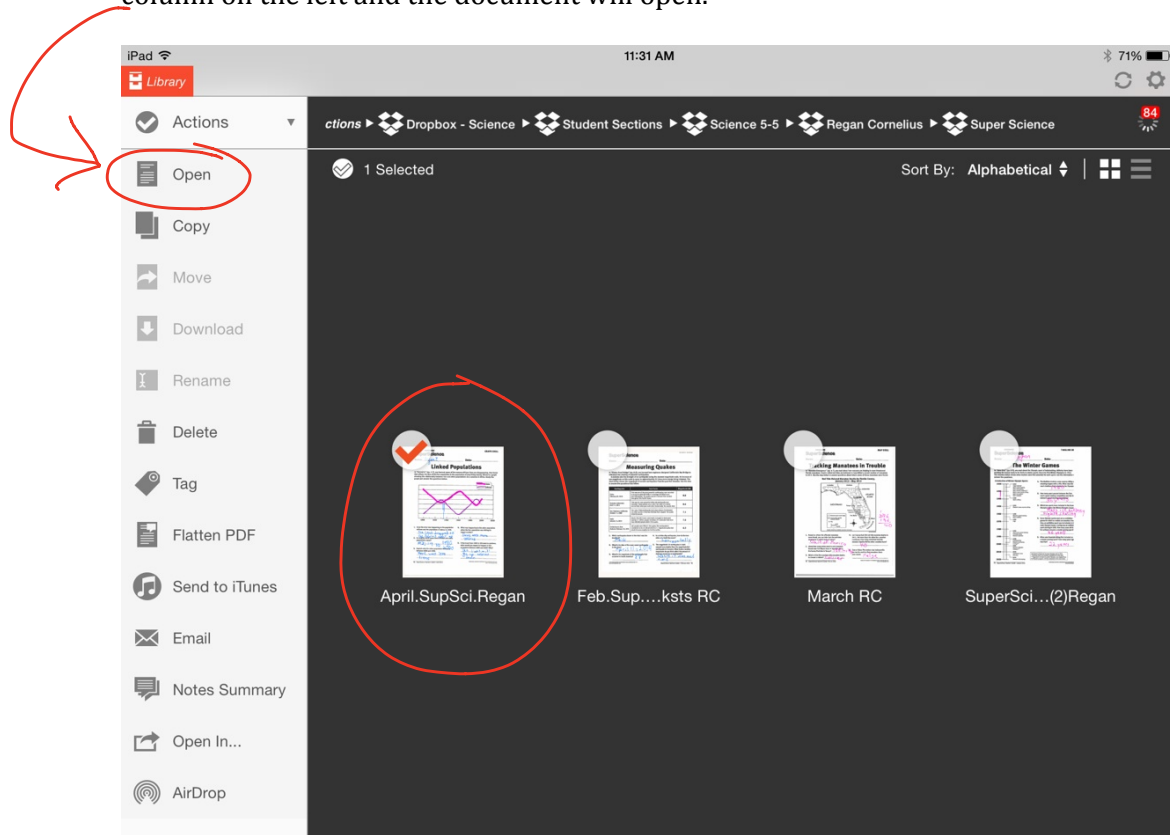


Once the PDF has been downloaded you are able to see the first page of the document.





Press the circle on the PDF and the checkmark will appear. Now press 'Open' in the column on the left and the document will open.



The toolbar on the right side of the screen gives you many options to use for your annotations.

iPad 11:34 AM 70%

Library April.SupSci.Regan

**SuperScience**

Name: Regan C. Date: \_\_\_\_\_

**Linked Populations**

In "Fenced In" (pp. 4-7), you learned some of the reasons African lions are disappearing. One factor that affects the size of the lion population is the population of prey living nearby. Below is a graph showing the relationship between lion and zebra populations on a savanna in Africa. Study the graph and answer the questions below.

Hello  
IT'S TIME!!

Year	Lions (Pink Line)	Zebras (Purple Line)
1900	High	Low
1920	Medium	High
1940	High	Medium
1960	Low	Low
1980	Medium	High
2000	High	Medium
2020	Medium	Low

- Describe what was happening to the population of lions and the population of zebras in 1920.  
The lions dropped so the zebras went up
- In roughly which years were the lion and zebra populations equal?  
1920 1930 1980 2000
- Explain why the zebra population increased between 1900 and 1930.  
There was less
- What was happening to the zebra population when the lion population was hitting its lowest number?  
There was more zebras
- If the trend from 1990 to 2000 were to continue, what would you expect to happen in this ecosystem between 2000 and 2020? Why?  
The lions will

1/2

I use iAnnotate primarily to grade student work.

Library April.SupSci.Regan x March RC 11:37 AM 69%

### Tracking Manatees in Trouble

Name: \_\_\_\_\_ Date: \_\_\_\_\_

In "Manatee Emergency" (pp. 4-7), you read about how rescuers are helping to save threatened Florida manatees. Events called red tides are believed to have killed a record number of manatees in 2013. Use the map below to answer questions about where some of those manatees were found.

#### Red Tide-Related Manatee Deaths by Florida County, January 2013 - May 2013

236  
196  
40

- Based on where the affected manatees were found, you can infer that the red tides developed in which body of water?  
*Gulf of Mexico*
- About how many miles would a sick manatee found near Fort Myers have to travel to get to the Lowry Park Zoo in Tampa?  
*100 miles*
- Which of the five counties with manatee deaths is closest to Miami?  
*Cattler*
- Lee County had 236 red tide manatee deaths in 2013, 196 more than the other four counties combined. How many combined red tide manatee deaths did the other counties have?  
*40*

PERMISSION GRANTED TO REPRODUCE FOR CLASSROOM USE ONLY. ©2014 BY SCHOLASTIC, INC.

Library April.SupSci.Regan x March RC 11:37 AM 69%

### How Many Tornadoes?

Tornadoes in the United States most often strike during the spring and early summer months. The line graph below shows about how many tornadoes were reported in the U.S. in 2013.

#### U.S. Tornadoes in 2013

Month	Number of Tornadoes
Jan.	75
Feb.	40
Mar.	25
April	75
May	260
June	125
July	75
Aug.	40
Sept.	25
Oct.*	50
Nov.*	75
Dec.*	25

- In which month did the fewest tornadoes occur?  
*December*
- About how many tornadoes occurred in January?  
*75*
- Did the number of tornadoes increase, decrease, or stay the same from March to April?  
*Increase*
- About how many tornadoes formed in all during April, May, and June?  
*475*
- When did the number of tornadoes decline for four months straight?  
*June, July, Aug, Sept.*
- Why is a line graph a good way to present this data?  
*you can show the increases and decreases.*

PERMISSION GRANTED TO REPRODUCE FOR CLASSROOM USE ONLY. ©2014 BY SCHOLASTIC, INC.

NGSS SKILL

Once I've graded the assignments, I press the sync button (the rotating arrows in the top right of the screen) and iAnnotate syncs with Dropbox. The students are able to login to their Dropbox account and see their corrected work!

The screenshot shows an iPad interface with a document titled "Tracking Manatees in Trouble" from "SuperScience". The document includes a "MAP SKILL" section with a map of Florida showing "Red Tide-Related Manatee Deaths by Florida County, January 2013 - May 2013". The map highlights Lee County in the southwest. Handwritten green annotations include "-2" and "+34/36" next to the map. Handwritten pink annotations include "236", "196", and "40" next to question 4. Question 1 asks for the body of water where red tides developed, with "Gulf of Mexico" written in pink. Question 2 asks for the distance a sick manatee would travel. The interface also shows a file list on the left and a bottom navigation bar with "Files", "Photos", "Favorites", and "Settings".

**SuperScience** MAP SKILL

Name: \_\_\_\_\_ Date: \_\_\_\_\_

## Tracking Manatees in Trouble

In "Manatee Emergency" (pp. 4-7), you read about how rescuers are helping to save threatened Florida manatees. Events called red tides are believed to have killed a record number of manatees in 2013. Use the map below to answer questions about where some of those manatees were found.

**Red Tide-Related Manatee Deaths by Florida County, January 2013 - May 2013**

ALABAMA GEORGIA Jacksonville  
 ATLANTIC OCEAN  
 Florida  
 Tampa DESOTO  
 SARASOTA CHARLOTTE  
 Fort Myers COLLEGE  
 Miami  
 Straits of Florida

Manatee year-round range  
 County with red tide manatee deaths  
 City  
 0 50 MI  
 0 100 KM

SOURCE: Florida Fish and Wildlife Conservation Commission MAP: JIM McKEON

- Based on where the affected manatees were found, you can infer that the red tides developed in which body of water?  
Gulf of Mexico
- About how many miles would a sick manatee
- Lee County had 236 red tide manatee deaths in 2013, 196 more than the other four counties combined. How many combined red manatee deaths did the other count?  
40

I have found iAnnotate very easy to use. It is so much nicer having student assignments available through this app. Now I don't take home a huge stack of papers!